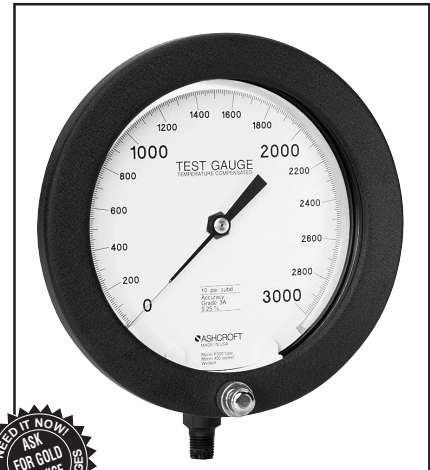


- *Temperature-compensated movement that significantly reduces temperature error*
- *MicroSpan™ adjustment for ease in span calibration*
- *Hydraulically staked movement with Teflon-coated gears and bearings improves stability*
- *Externally adjustable dial on standard model*
- *White aluminum dial, black numbers with polished mirror band*
- *High and low pressure movement stops are standard*

The standard Ashcroft® test gauge case style features a solid-front aluminum case with a hinged ring.

The dial has a polished mirror band for pointer reflection to prevent parallax error and is available in 4½", 6" and 8½" dial sizes in both lower and back connection. Pointer is a balanced-friction adjustable design with red knife edge tip for easy reading. The standard test gauge is competitively priced and available from stock for most ranges, tube materials and case sizes.



STANDARD RANGES

Pressure psi	kg/cm² - bar	kPa
0/15	0/1	0/100
0/30	0/1.6	0/160
0/60	0/2.5	0/250
0/100	0/4	0/400
0/150	0/6	0/600
0/200	0/10	0/1000
0/300	0/16	0/1600
0/400	0/25	0/2500
0/600	0/40	0/4000
0/800	0/60	0/6000
0/1000	0/100	0/10,000
0/1500	0/160	0/16,000
0/2000	0/250	0/25,000
0/3000	0/400	0/40,000
0/5000	0/600	0/60,000
0/10,000		
Vacuum 30" Hg/0	-1/0	-100/0
Compound 30" Hg/15 psi	-1/1.5	-100/150
30" Hg/30 psi	-1/3	-100/300
30" Hg/60 psi	-1/5	-100/500
30" Hg/100 psi	-1/9	-100/900
30" Hg/150 psi		
30" Hg/200 psi		
30" Hg/300 psi		
30" Hg/400 psi		

OPTIONAL CASE TYPES



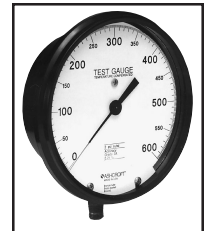
CASE TYPE XAZ
4½" solid-front aluminum, black-epoxy finish, threaded aluminum ring, lower and back connection



CASE TYPE XAY
4½" & 6" solid-front aluminum, black-epoxy finish, black polypropylene ring. Stem, surface or flush mount, lower or back connection



CASE TYPE XTY
4½" solid-front black phenolic, black polypropylene ring. Stem, surface or flush mount, lower or back connection



CASE TYPE XQY
6" solid-front black, glass reinforced polypropylene, black polypropylene ring. Stem, surface or flush mount, lower or back connection

BOURDON SYSTEM SELECTION

Ordering Code	Bourdon Tube & Tip Material ⁽¹⁾ (all joints TIG welded except "A")	Socket Material	Tube Type	Range Selection Limits (psi)	NPT Conn. ⁽²⁾
A	Grade A Phosphor Bronze Tube-Brass Tip, Silver Brazed	Brass	C-Tube	Vac/400 psi	¼
P	K Monel	Monel 400	⁽³⁾	Vac/10,000 psi	¼

(1) For selection of the correct bourdon system material, see the media application table on page 172.
 (2) Optional connection available: ½ NPT
 (3) Vac through 1,500 psi-C-Tube
 2000 through 10,000 psi-Helical
 See page 166 for optional test gauge carrying case and handle.

TO ORDER THIS 1082 TEST GAUGE:

Select:

1. Dial size—4½", 6", 8½" 45

2. Case type—1082 1082

3. Bourdon system selection ordering code PS

4. Connection size—¼ (02) 02L

5. Connection location—Lower (L), Back (B) 0/2000 psi

6. Standard pressure range—2000 psi

(★) "S" denotes solid-front case design