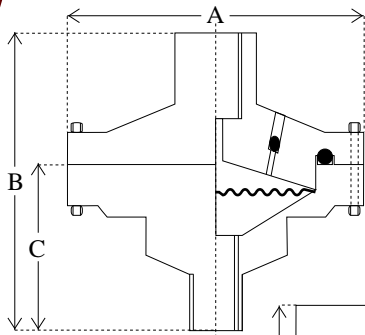
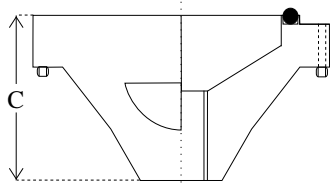


FICO DIAPHRAGM SEAL

TYPE: CT100 Two Piece Bolted Diaphragm Seal



Dimensions	mm
A	87.0
B	86.5
C	48.0



The CT100 is designed to provide isolation for pressure instruments in corrosive, viscous or crystallising liquid, vapour and gas service and wherever it is desirable to protect the pressure instrument from the process media. The 44mm diameter diaphragm element can be used with most 100 and 160mm pressure gauges such as the 1279 Ashcroft Duragauges. The bolted design with welded diaphragm enables easy removal of the top housing and instrument as a sealed unit without disturbing the filled system. The bolted design allows the seal and instrument to face exactly the way you want. A 1/8" bsp flushing port can be provided if required.

FICO Diaphragm pressure seals can be used in conjunction with pressure transmitters, gauges, switches and most other pressure instruments.

Pressure Rating: SS Bolt -70 to 13,775 kPa 20°C
HT Bolt -70 to 18,380 kPa 20°C

*Drawing schematic only. Design subject to change without notice.

How To Order: CT100 04M 04 S S S SL

Table A

Style - Two Piece Bolted	Code
Two piece bolted heavy duty	CT100

Table B

Process Connection	Code
1/2"NPT Male	04M*
Optional Lower Housing 1/2"NPT Female	04F

Table C

Instrument Connection	Code
1/2"NPTF	04

Table D

Top Housing	Code
316s/s	S

* Denotes standard type.

Table E

Bottom Housing	Code
316s/s	S

Table F

Diaphragm	Code
316L Hast. C	S* H

Table G

Fill Fluid	Code
Silicone	SL*
High Temperature	HS
Silicone Oxygen Service	OX
Food Grade	FG

NOTE: 316 stainless steel capillary available.
Specify length and instrument connection
required for end fittings.

CAUTION! Correct selection, fitting, filling, and testing of the combined Diaphragm Seal and pressure instrument is vital to achieve optimum performance. APS provide a complete filling, fitting and test service and can fit diaphragm seals to your instrument, free issued, or supply most pressure instruments required. Contact your closest APS branch for application assistance.

Manufactured by Austral-Powerflo Solutions Pty Ltd

· NATIONAL HOTLINE 1300 658 701

SYDNEY • BRISBANE • MELBOURNE • PERTH



AUSTRAL - POWERFLO
SOLUTIONS