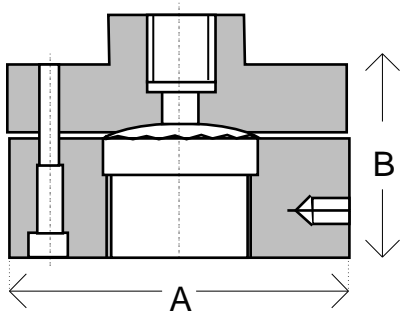


# FICO DIAPHRAGM SEAL

TYPE: CT133 - GENERAL PURPOSE CLAMPED SEAL



Dimensions	mm
A	63.5
B	39.0

\* Drawing schematic only. Design subject to change without notice.

The model CT133 Diaphragm pressure seal with its 28.5mm diameter diaphragm is designed for general purpose use with instruments requiring lower displacement, and with higher measuring ranges. Low volume bourdon tube gauge's such as Ashcroft 1009SW pressure gauges or small displacement pressure transmitters and switches may be used below 400kPa depending on application. Its clamped construction allows flexibility in selection of top, bottom and diaphragm materials while retaining cost effectiveness. An optional 1/8" BSP or 1/4" BSP flushing connection can be provided in the lower housing.

FICO Diaphragm pressure seals can be used in conjunction with pressure transmitters, gauges, switches and most other pressure instruments.

Pressure Range: 400 to 70,000kPa @ 25°C

How To Order: CT133 KN KP C C S SL

Table A

Style - GP Clamped	Code
Old Part No.133A1	CT133

Table B

Process Connection	Code
3/8" BSPF	KP
1/2" BSPF	KN*
1/2" NPTF	04
3/4" NPTF	06
3/4" BSPF	KO

Table C

Instrument Connection	Code
3/8" BSPP	KP*
1/2" BSPP	KN
1/2" NPT	04
1/4" BSPP	KJ
1/4" NPT	02
Option	XX

Table D

Top Housing	Code
316s/s	S
Carbon Steel	C*
Other	X

Table E

Bottom Housing	Code
316s/s	S
Carbon Steel	C*
Hast Alloy	H
Teflon	T
Rylon	R
Monel	M

\* Denotes standard type.

NOTE: 316 stainless steel armoured capillary available - specify length and instrument connection

Table F

Diaphragm	Code
316L	S*
Hast. C	H
Tantalum	T
Monel	M
Other	X

Table G

Fill Fluid	Code
Glycerine	CG
Silicon	SL*
High Temperature Silicone	HS
Food Grade	FG
Oxygen Service	OX

**CAUTION!** Correct selection, fitting, filling, and testing of the combined Diaphragm Seal and pressure instrument is vital to achieve optimum performance. APS provide a complete filling, fitting and test service and can fit diaphragm seals to your instrument, free issued, or supply most pressure instruments required. Contact your closest APS branch for application assistance.

Manufactured by Austral-Powerflo Solutions Pty Ltd

NATIONAL HOTLINE 1300 658 701

SYDNEY • BRISBANE • MELBOURNE • PERTH



AUSTRAL - POWERFLO SOLUTIONS