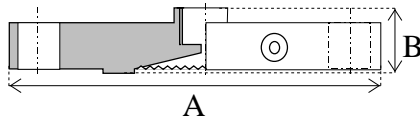


FICO DIAPHRAGM SEALS

TYPE: FA Flanged General Purpose Seal



Dimensions (mm)	Size (to 150lb ANSI)	
	50	80
A	152.5	180.0
B	41.0	42.0

* Drawing schematic only.
Design subject to change without notice.

Pressure Range: As flange rating.

The model FA Diaphragm pressure seal is designed for general purpose use when a flanged process connection is required. Standard in 316 stainless steel as ANSI 50mm 150lb (3") and available to most flange standards and ratings. Its welded construction provides a low installation profile and low cost in flanged pipework, simply bolting onto the matching pipe flange on the process side.

Slurry Boot - A cast polyurethane wear resistant membrane is available which can be used on flanged seals to protect the flexible diaphragm from erosion ie. in slurry systems or pneumatic conveying applications. It also serves as a flange gasket.

FICO Diaphragm pressure seals can be used in conjunction with pressure transmitters, gauges, switches and most other pressure instruments.

How To Order: FA 150 050 KP S O S SL

Table A

Style - Flange	Code
Old Part No. 171A12(2") 173A1(3") 175A3(4")	FA

Table B

Flange Rating ANSI	Code
150lb	150*
300lb	300
600lb	600
Other Flange	XXX

Table C

Flange Size	Code
40mm (1 1/2")	040
50mm (2")	050*
80mm (3")	080
100mm (4")	100

Table D

Instrument Connection	Code
3/8"BSPP	KP*
1/2"BSPP	04
1/4"NPT	02
1/4"BSP	KA

Table E

Top Housing	Code
316s/s Special	S* X

Table F

Bottom Housing	Code
None	O

Table G

Diaphragm	Code
316L Hast. C	S* H

Table H

Fill Fluid	Code
Glycerine	CG
Silicone	SL*
High Temp. Silicone	HS
Food	FG
Oxygen	OX

* Denotes standard type.

NOTE: 316 stainless steel armoured capillary available - specify length and instrument connection required for end fittings.

CAUTION! Correct selection, fitting, filling, and testing of the combined Diaphragm Seal and pressure instrument is vital to achieve optimum performance. APS provide a complete filling, fitting and test service and can fit diaphragm seals to your instrument, free issued, or supply most pressure instruments required. Contact your closest APS branch for application assistance.

Manufactured by Austral-Powerflo Solutions Pty Ltd

· NATIONAL HOTLINE 1300 658 701
SYDNEY • BRISBANE • MELBOURNE • PERTH



AUSTRAL - POWERFLO
SOLUTIONS