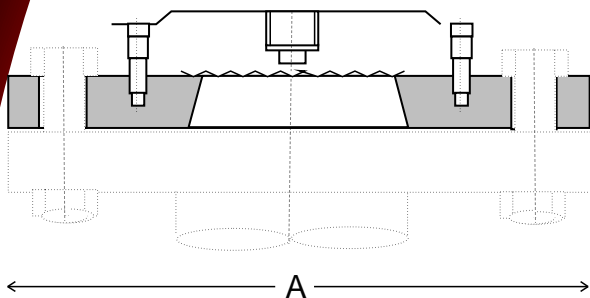


FICO DIAPHRAGM SEAL

TYPE: FB - FLANGED DESIGN 73MM DIAPHRAGM FOR CORROSIVE SERVICE



The model FB Diaphragm pressure seal is designed for corrosive service where special materials are required or a large diaphragm is required to drive an instrument with a low pressure range or larger displacement and when a flanged process connection is required. Standard in 316 stainless steel as ANSI 80mm 150lb (3") and available to most flange standards and ratings. It's clamped or welded construction allows maximum flexibility in material selection of the top and bottom housing and diaphragm.

Dimension (mm)	Size (to 150lb ANSI)		
	80	100	150
A	180.0	228.7	279.5
B	52.8	52.8	54.5

* Drawing schematic only. Design subject to change without notice.

FICO Diaphragm pressure seals can be used in conjunction with pressure transmitters, gauges, switches and most other pressure instruments.

Pressure Range: -70kPa to maximum as per flange rating.

How To Order: FB 150 080 KP C S S SL

Table A

Style	Code
Old Part No.136A3	FB

Table B

Flange Rating ANSI	Code
150lb	150*
300lb	300
600lb	600

Table C

Flange Size	Code
80mm (3")	080*
100mm (4")	100
150mm (6")	150

* Denotes standard type.

Table D

Instrument Connection	Code
3/8"BSP	KP*
1/2"NPT	04
1/4"NPT	02
1/4"BSP	KA

Table E

Top Housing	Code
Carbon Steel	C*
316ss	S

Table F

Bottom Housing	Code
Carbon Steel	C
316ss	S*
Hast C	H
Monel	M
Special	X

Table G

Diaphragm	Code
316L	S*
Monel	M
Hast. C	H
Tantalum	T
Special	X

Table H

Fill Fluid	Code
Glycerine	CG
Silicon	SL*
High Temperature	HS
Silicone	
Food Grade	FG
Oxygen Service	OX

NOTE: 316 stainless steel armoured capillary available - specify length and instrument connection required for end fittings.

CAUTION! Correct selection, fitting, filling, and testing of the combined Diaphragm Seal and pressure instrument is vital to achieve optimum performance. APS provide a complete filling, fitting and test service and can fit diaphragm seals to your instrument, free issued, or supply most pressure instruments required. Contact your closest APS branch for application assistance.

Manufactured by Austral-Powerflo Solutions Pty Ltd

NATIONAL HOTLINE 1300 658 701

SYDNEY • BRISBANE • MELBOURNE • PERTH



AUSTRAL - POWERFLO SOLUTIONS