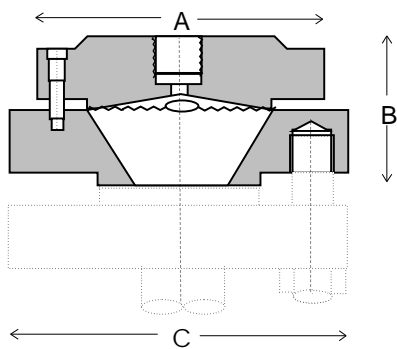


# FICO DIAPHRAGM SEAL

TYPE: FC - FLANGED DESIGN 73MM DIAPHRAGM FOR VISCOUS/WAXY SERVICE



Dimension (mm)	Sizes (to 150lb ANSI)			
	15	20	25	50
A	108.0	108.0	108.0	108.0
B	63.0	63.0	63.0	47.1
C	108.0	108.0	108.0	152.5

\* Drawing schematic only. Drawing subject to change without notice

The model FC Diaphragm pressure seal is designed for service where viscous or waxy process fluids would normally build up on the diaphragm. Available in ANSI 15mm to 50mm flange size and to most flange standards and ratings. Its clamped construction allows maximum flexibility in material selection of the top and bottom housing and diaphragm.

FICO Diaphragm pressure seals can be used in conjunction with pressure transmitters, gauges, switches and most other pressure instruments.

Pressure Range: -70kPa to maximum as per flange rating.

How To Order: FC 150 025 KP C C S SL

Table A

Style	Code
Old Part No.136A3	FC

Table B

Flange Rating ANSI	Code
150lb	150*
300lb	300
600lb	600

Table C

Flange Size	Code
15mm (1/2")	015
20mm (3/4")	020
25mm (1")	025
50mm (2")	050

Table D

Instrument Connection	Code
3/8" BSP	KP*
1/2" NPT	04
1/4" NPT	02
1/4" BSP	KA

Table E

Top Housing	Code
Carbon Steel	C*
316ss	S

Table F

Bottom Housing	Code
Carbon Steel	C*
316ss	S
Hast C	H
Monel	M
Special	X

Table G

Diaphragm	Code
316L	S*
Monel	M
Hast. C	H
Tantalum	T
Special	X

Table H

Fill Fluid	Code
Glycerine	CG
Silicon	SL*
High Temperature	HS
Silicone	
Food Grade	FG
Oxygen Service	OX

\* Denotes standard type.

NOTE: 316 stainless steel armoured capillary available - specify length and instrument connection required for end fittings.

**CAUTION!** Correct selection, fitting, filling, and testing of the combined Diaphragm Seal and pressure instrument is vital to achieve optimum performance. APS provide a complete filling, fitting and test service and can fit diaphragm seals to your instrument, free issued, or supply most pressure instruments required. Contact your closest APS branch for application assistance.

Manufactured by Austral-Powerflo Solutions Pty Ltd

NATIONAL HOTLINE 1300 658 701

SYDNEY • BRISBANE • MELBOURNE • PERTH



AUSTRAL - POWERFLO SOLUTIONS

LFC 7/11