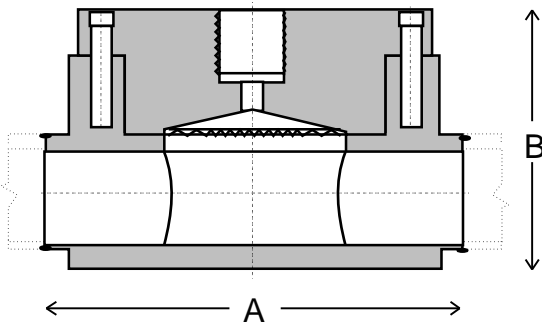


FICO DIAPHRAGM SEAL

TYPE: PF - WELDED IN-LINE FLOW THROUGH DESIGN



The model PF Diaphragm pressure seal is designed to weld directly into the process pipe. Available in sizes to suit 20mm to 50mm pipelines, the top housing has a welded diaphragm that allows it to be removed without losing the fluid fill to inspect the diaphragm or during routine maintenance.

FICO Diaphragm pressure seals can be used in conjunction with pressure transmitters, gauges, switches and most other pressure instruments.

Pressure Range: -70kPa to a maximum of 50,000kPa. Higher on request.

Dimension (mm)	Pipe Size			
	20	25	40	50
A	100	100	100	100
B	62	68	68	95

* Drawing schematic only. Subject to change without notice.

How To Order: PF025 PW KP S C S SL

Table A

Style - Welded In Line	Size	Code
Old Part No. 171A5	20mm (¾")	PF020
	25mm (1")	PF025
	40mm (1½")	PF040
	50mm (2")	PF050

Table B

Process Connection	Code
Weld Section	PW
Top Housing Only	TH

Table C

Instrument Connection	Code
3/8"BSPP	KP

Table D

Top Housing	Code
316ss	S*
Other	X

Table E

Bottom Housing	Code
316ss	S
Carbon Steel	C*
None	O

* Denotes standard type.

Table F

Diaphragm	Code
316L	S*
Hast. C	H
Other	X

Table G

Fill Fluid	Code
Glycerine	CG
Silicon	SL*
High Temperature Silicone	HS
Food Grade	FG
Oxygen Service	OX

NOTE: 316 stainless steel armoured capillary available - specify length and instrument connection required for end fittings.

CAUTION! Correct selection, fitting, filling, and testing of the combined Diaphragm Seal and pressure instrument is vital to achieve optimum performance. APS provide a complete filling, fitting and test service and can fit diaphragm seals to your instrument, free issued, or supply most pressure instruments required. Contact your closest APS branch for application assistance.

Manufactured by Austral-Powerflo Solutions Pty Ltd

NATIONAL HOTLINE 1300 658 701

SYDNEY • BRISBANE • MELBOURNE • PERTH



AUSTRAL - POWERFLO SOLUTIONS