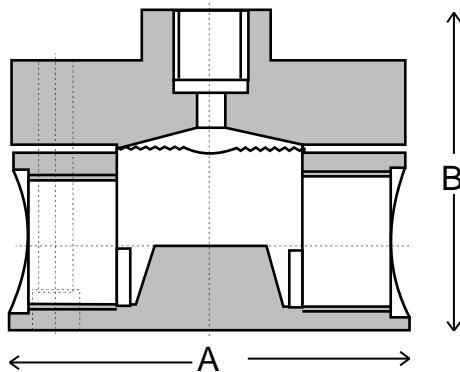


FICO DIAPHRAGM SEAL

TYPE: PS - THREADED IN-LINE FLOW THROUGH DESIGN



The model PS Diaphragm pressure seal is designed to be screwed directly into the process pipe. Available threaded 1/2" BSP to suit a 1/2" pipeline, the top housing has a clamped diaphragm with a 28mm diameter.

FICO Diaphragm pressure seals can be used in conjunction with pressure transmitters, gauges, switches and most other pressure instruments.

Pressure Range: 400kPa to a maximum of 70,000kPa.

Dimension (mm)	1/2" BSP Screwed, 1/2" Pipeline
A	63.5
B	54.0

* Drawing schematic only. Design subject to change without notice.

How To Order: PS PW KP C C S SL

Table A

Style	Code
Old Part No. 133a2 (1/2")	PS

Table B

Process Connection	Code
Complete Assembly	PW*
Top Housing Only	TH

Table C

Instrument Connection	Code
3/8" BSPP	KP

Table D

Top Housing	Code
316ss	S
Carbon Steel	C*
Other	X

Table E

Bottom Housing	Code
316ss	S
Carbon Steel	C*

* Denotes standard type.

Table F

Diaphragm	Code
316L	S*
Hast. C	H
Tantulum	T
Other	O

Table G

Fill Fluid	Code
Glycerine	CG
Silicon	SL*
High Temperature	HS
Silicone	
Food Grade	FG
Oxygen Service	OX

NOTE: 316 stainless steel armoured capillary available - specify length and instrument connection required for end fittings.

CAUTION! Correct selection, fitting, filling, and testing of the combined Diaphragm Seal and pressure instrument is vital to achieve optimum performance. APS provide a complete filling, fitting and test service and can fit diaphragm seals to your instrument, free issued, or supply most pressure instruments required. Contact your closest APS branch for application assistance.

Manufactured by Austral-Powerflo Solutions Pty Ltd

· NATIONAL HOTLINE 1300 658 701

SYDNEY • BRISBANE • MELBOURNE • PERTH



AUSTRAL - POWERFLO
SOLUTIONS