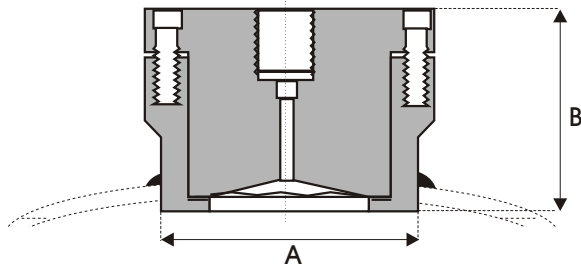


FICO DIAPHRAGM SEAL

TYPE: SW - PIPELINE SOCKET WELD DESIGN



Dimension (mm)	Pipe Size	
	80	100
A	83	83
B	68	52

*Drawing schematic only. Design subject to change without notice.

The model SW Diaphragm pressure Seal is designed to have its bottom housing welded directly onto the process pipe. Suitable for use in 80mm and 100mm pipe sizes, the bottom housing in SW080 (80mm) size has a "saddle" profile which fits the pipe profile. The Sw100 welds directly onto the pipe and can be used in pipe sizes from 100mm upwards. Available threaded 1/2" bsp to suit a 1/2" pipeline, the top housing has a welded diaphragm and can be removed without losing the fill fluid allowing inspection of the diaphragm or during routine maintenance (Sw100 pictured).

Pressure Range: -70 kPa to maximum 50,000 kPa.

FICO Diaphragm pressure seals can be used in conjunction with pressure transmitters, gauges, switches and most other pressure instruments

How To Order: SW080 SW KP S C S SL

Table A

Style	Size	Code
Old Part No. 171A10	80mm (3")	SW080*
	100mm (4")	SW100

Table B

Process Connection	Code
Socket Weld	SW
Top Housing Only	TH

Table C

Instrument Connection	Code
3/8"BSPP	KP*

Table D

Top Housing	Code
316SS	S*
Other	X

Table E

Bottom Housing	Code
316SS	S
Carbon Steel	C*
None	O

*Denotes standard type.

Table F

Diaphragm	Code
316L	S*
Other	X

Table G

Fill Fluid	Code
Glycerine	CG
Silicone	SL*
High Temperature Silicone	HS
Food Grade	FG
Oxygen Service	OX

NOTE: 316 stainless steel armoured capillary available - specify length and instrument connection required for end fittings.

CAUTION! Correct selection, fitting, filling, and testing of the combined Diaphragm Seal and pressure instrument is vital to achieve optimum performance. APS provide a complete filling, fitting and test service and can fit diaphragm seals to your instrument, free issued, or supply most pressure instruments required. Contact your closest APS branch for application assistance.

Manufactured by Austral-Powerflo Solutions Pty Ltd

NATIONAL HOTLINE 1300 658 701

SYDNEY • BRISBANE • MELBOURNE • PERTH



AUSTRAL - POWERFLO
SOLUTIONS