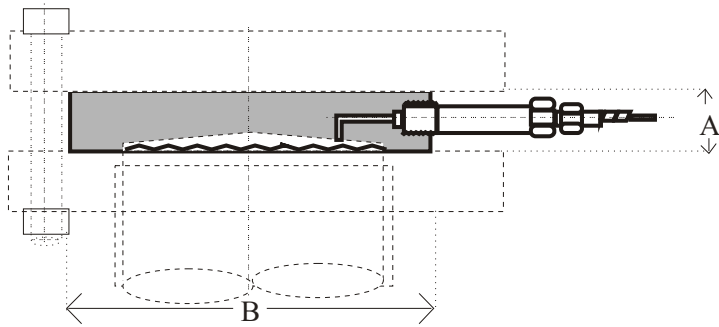


FICO DIAPHRAGM SEAL

TYPE: WF - WAFER DESIGN GENERAL PURPOSE SEAL



| Dimensions (mm) | Sizes (to 150lb ANSI) | | |
|-----------------|-----------------------|-----|-----|
| | 50 | 80 | 100 |
| A | 24 | 24 | 32 |
| B | 92 | 127 | 133 |

* Drawing schematic only. Design subject to change without notice.

FICO Diaphragm pressure seals can be used in conjunction with pressure transmitters, gauges, switches and most other pressure instruments.

The Model WF Diaphragm pressure seal is designed for mounting between a process flange and a blind cover flange. The instrument connection is into the side of the seal and the instrument is always remotely mounted using stainless steel capillary.

Standard in 316ss as ANSI 50mm 150lb (2") and available to most flange standards and ratings. Its welded construction provides a low installation profile between the two flanges.

Slurry Boot - A cast polyurethane wear resistant membrane is available to protect the flexible diaphragm from erosion ie. in slurry systems or pneumatic conveying applications. It also serves as a flange gasket.

How To Order: WF 050 KJ S O H SL

Table A

| Style - Wafer Flanges | Code |
|-----------------------|--------|
| Old Part No. | WF150* |
| 171A1 1 - 2" | WF300 |
| 173A4 - 3" | WF600 |
| | WF900 |

Table B

| Process Connection | Code |
|--------------------|------|
| 2" \ 50mm | 050* |
| 3" \ 80mm | 080 |
| 4" \ 100mm | 100 |

* Denotes standard type.

Table C

| Instrument Connection | Code |
|-----------------------|------|
| 1/4" BSPP | KJ* |

Table D

| Wafer Material | Code |
|----------------|------|
| 316ss | S* |

Table E

| Bottom Housing | Code |
|-----------------|------|
| Customer Supply | O |

Table F

| Diaphragm Material | Code |
|--------------------|------|
| 316L | S |
| Hast. C | H |

Table G

| Fill Fluid | Code |
|------------------|------|
| Glycerine | CG |
| Silicon | SL* |
| High Temperature | HS |
| Silicone | |
| Food Grade | FG |
| Oxygen Service | OX |

NOTE: 316 stainless steel armoured capillary available - specify length and instrument connection required for end fittings.

CAUTION! Correct selection, fitting, filling, and testing of the combined Diaphragm Seal and pressure instrument is vital to achieve optimum performance. APS provide a complete filling, fitting and test service and can fit diaphragm seals to your instrument, free issued, or supply most pressure instruments required. Contact your closest APS branch for application assistance.

Manufactured by Austral-Powerflo Solutions Pty Ltd

NATIONAL HOTLINE 1300 658 701

SYDNEY • BRISBANE • MELBOURNE • PERTH



AUSTRAL - POWERFLO
SOLUTIONS